

# Regent

SEVEN SEAS CRUISES®

AN UNRIVALED EXPERIENCE™

## Regent Seven Seas Cruises® Reveals *Seven Seas Splendor*™ Suite Details and Artistic Renderings 15 Suite Categories Perfect Luxury At Sea

**Hong Kong** (Mar. 19, 2019) – In anticipation of the newest cruise ship joining its fleet, Regent Seven Seas Cruises® announced in January details of the Regent Suite on *Seven Seas Splendor*™, the largest and most elegant suite ever built on a luxury ship. The lavish Regent Suite sets the tone for all 14 other suite categories on *Seven Seas Splendor*. Today, Regent reveals additional details of all guest suite categories, further establishing *Seven Seas Splendor* as the ship that will perfect luxury when she debuts in February 2020.

Luxury is found in intricate details, exquisite finishings and enormous balcony space. More than 46,000 square-feet of Italian marble will adorn *Seven Seas Splendor* – more than an acre of marble – including the marble-detailed bathrooms in each of her 375 guest suites. Nearly 52,000 square-feet of balcony space is found on the all-balcony vessel – larger than the size of an American football field and averaging 138 square feet of balcony space per suite.

Approximately 500 crystal chandeliers will illuminate the ship's interior.



“Perfecting luxury is about obsessing over large and small details,” explains Regent Seven Seas Cruises President and CEO Jason Montague. “From specially commissioned one--of-a-kind artwork to visually stimulating touches throughout the ship, each space on *Seven Seas Splendor* will display finely tailored designs that offer a comfortable and stylish experience for luxury travelers. With an expansive passenger-to-space ratio and an exceptionally low guest-to-crew ratio, *Seven Seas Splendor* will be one of the world’s most spacious, intimate and beautiful ships ever to sail the globe.”

### Distinctive Suites

The Master, Grand, Splendor and Seven Seas suite categories represent the 32 Distinctive Suites on board *Seven Seas Splendor*. Guests in Distinctive Suites enjoy personalized butler service, guaranteed dining reservations and customized pillows and bath products, among other amenities. These suites are designed to blend comfort and luxury, focusing on impeccable details, exquisite high-contrast materials and lush jewel-toned accents. The suites are designed by [Studio Dado](#), [Tillberg Design](#), and [Total Solution Interiors](#).

**Master Suite.** This two-bedroom oasis is styled like an elegant Park Avenue palace, replete with rich woods and highlighted by touches of aubergine. Located at the aft of the ship on decks eight and nine allowing for unobstructed views of the horizon, the four Master Suites measure between 1,895 and 2,108 square-feet and boast an expansive living area, exquisite bar for entertaining, spacious balconies up to 994 square-feet, and two full ornate marble and stone bathrooms.



**Master Suite**



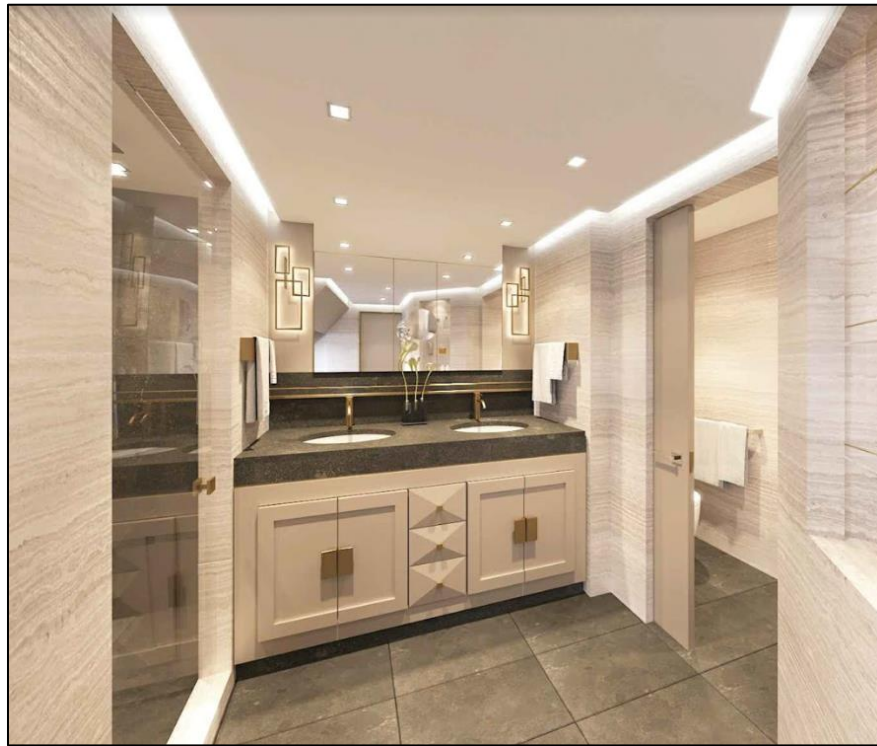
**Master Suite**

*Grand Suite.* The Grand Suite features striking emerald design accents perfected by rich grey, brown, and cream tones. Ranging from 1,277 to 1,836 square-feet, the Grand Suite features an expansive private balcony, two majestic baths, and living areas with rich stone mosaics, exotic woods and curated furniture based on haute couture fashion. Craftsmanship is foremost on display with bespoke detailing, and an upholstered leather wall in an intricate stitch pattern serves as the backdrop for the bedroom. With ample space, the suite features a living room with a wrapped-leather floor-to-ceiling bar – ideal for entertaining.



**Grand Suite**

*Splendor Suite.* Ranging in size from 821 to 918 square-feet, the one bedroom, one-and-a-half-bathroom Splendor Suites are designed with calming hues of cream, grey and brown, and plush furniture. It features a dining table for in-room service, spacious closet, and an elegant marble and stone-detailed bath.



**Splendor Suite Marble Bathroom**

*Seven Seas Suite.* This sanctuary offers more than 800 square-feet of exquisite space, and exudes a cosmopolitan apartment feel with a soothing color palette complimented by plush furnishings. The suite flows effortlessly from living room to dining area to bedroom, with sliding glass doorways leading to a spacious private balcony. A magnificent marble bathroom sits adjacent to the oversized bedroom and large walk-in closet.



**Seven Seas Suite**

## Spacious Suites

The Penthouse, Concierge, Superior, Deluxe Veranda and Veranda suite categories are purposefully designed to maximize ocean views that can be enjoyed from the solace of a large private balcony. Along with the heavenly comfort of Elite Slumber beds, guests enjoy spacious closets, plush bathrobes and slippers, an included mini-bar stocked daily, and many other prime amenities.

*Penthouse Suite.* Conjuring elegance from floor to ceiling and complete with personalized butler service, the 55 sapphire-inspired Penthouse Suites come in three categories that range up to 642 square-feet, with an entertainment center that separates the living room and bedroom. Sleek sliding glass doorways in both the bedroom and living room lead to an oversized balcony with comfortable outdoor furnishings. Even the smallest of luxury details are included such as lined jewelry drawers to designated spaces for designer handbags. A perfected luxury from *Seven Seas Explorer*, *Seven Seas Splendor's* sister ship, can be found in the closets. Penthouse Suites on *Seven Seas Splendor* will include larger expansive walk-in closets designed with two entries from the bathroom and living room. In addition, bathrooms have been designed for additional storage and counter space.



**Penthouse Suite**

*Concierge Suites.* Concierge Suites are highlighted by a soothing color palette of creams and blushes that inspire serenity and comfort. This 464 square-foot suite aboard *Seven Seas Splendor* comes in two categories and is purposefully designed to maximize ocean views, with the custom-crafted Elite Slumber™ Beds facing the private balcony, allowing guests front row access to stunning ocean scenery. Skilled master craftsmen adorn headboards with the finest shagreen leather, and furniture is upholstered with the most elegant Italian fabrics. Guests who stay in a Concierge Suite or a higher category suite enjoy a free one-night pre-cruise hotel package.



**Concierge Suite**

*Superior Suite.* Spacious and chic, the 464 square-foot Superior Suite is filled with light and peaceful serenity that comes with expansive ocean views. Its two categories feature a grand balcony, spacious sitting area and residential-like walk-in closet.

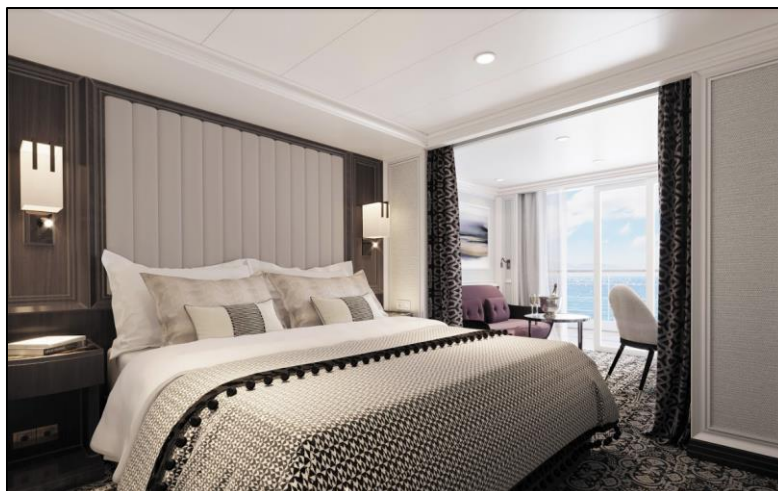


**Superior Suite**

*Deluxe Veranda and Veranda Suites.* The two-category Deluxe Veranda and Veranda suites on *Seven Seas Splendor* are up to 361 and 307 square feet respectively, placing them among the most spacious entry-level suites at sea. They feature a warm island manor feel and boast curtains that separate the bedroom, with vanity and sitting area outfitted with a plush sofa, a coffee table large enough for in-suite dining, and a large desk space.



**Deluxe Veranda Suite**



**Veranda Suite**

## Observation Lounge

In addition to suite designs, Regent today announced the interior design of the Observation Lounge on board *Seven Seas Splendor*. The Observation Lounge inspires the feeling of an enchanting English garden. Incorporating a light and airy color palette, the Observation Lounge's centerpiece is a unique and stunning whimsical chandelier comprised of hand-painted porcelain flowers, peonies and roses. Traditional English architectural molding adorn the walls and are colored in neutral hues to create a contemporary, elegant setting. The furniture adds to the tranquil nature of the space through its soft curved forms and lush upholsteries inspired by the fluid forms of flower petals. Specially commissioned art by Gorman Studios incorporates hand-painted English roses and flowers on glass screens to reflect the look of porcelain chandeliers.



**Observation Lounge**

A limited number of suites are available for sailings during *Seven Seas Splendor's* inaugural season. To learn more, please visit [www.RSSC.com](http://www.RSSC.com), call Singapore 800-616-7097 / India 0008-0004-01055 / Hong Kong and Rest of Asia +852 2165 6020 or contact a professional travel advisor to inquire about specific Regent Seven Seas Cruises voyages, including *Seven Seas Splendor* sailings. Luxury travelers and travel agents can also access a digital brochure [here](#).

## Regent Seven Seas Cruises

Regent Seven Seas Cruises offers an unrivaled experience to luxury travelers. The cruise line's modern four-ship fleet visits more than 450 iconic and immersive destinations around the world, and will add *Seven Seas Splendor* in 2020 as the fleet's fifth ship and then grow by a sixth ship in 2023. All luxuries are included in Regent Seven Seas Cruises voyages, such as all-suite accommodations, the largest collection of unlimited shore excursions, unlimited internet access, highly personalized service, exquisite cuisine, fine wines and spirits, gratuities, ground transfers and one-night, pre-cruise hotel packages for guests staying in Concierge-level suites and higher. In 2018 the cruise line concluded a \$125 million refurbishment program of *Seven Seas Mariner*, *Seven Seas Voyager* and *Seven Seas Navigator* to elevate the fleet's elegance to the benchmark set by *Seven Seas Explorer*.

# # #

### For media enquiries, please contact:

Chloe Chan / Nancy Ho

GHC Asia Hong Kong

**Phone:** +852 2810 0532

**Email:**

[chloe.chan@ghcasia.com](mailto:chloe.chan@ghcasia.com)

[nancy.ho@ghcasia.com](mailto:nancy.ho@ghcasia.com)

Ng Yuin Yi / Joleena Seah

GHC Asia Singapore

**Phone:** +65 6723 8144

**Email:**

[yuinyi.ng@ghcasia.com](mailto:yuinyi.ng@ghcasia.com)

[joleena.seah@ghcasia.com](mailto:joleena.seah@ghcasia.com)

Renee Jiang / Luona Xu

GHC Asia Shanghai

**Phone:** +86 21 5213 3030

**Email:**

[renee.jiang@ghcasia.com](mailto:renee.jiang@ghcasia.com)

[luona.xu@ghcasia.com](mailto:luona.xu@ghcasia.com)